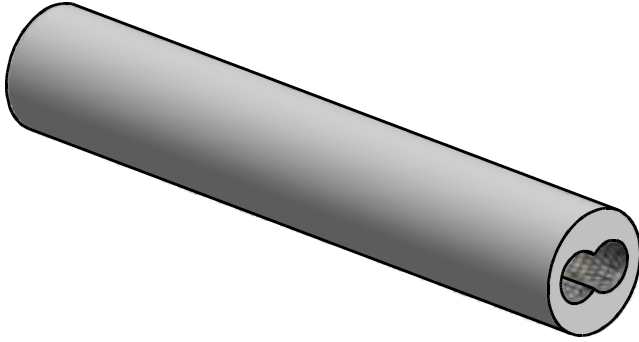
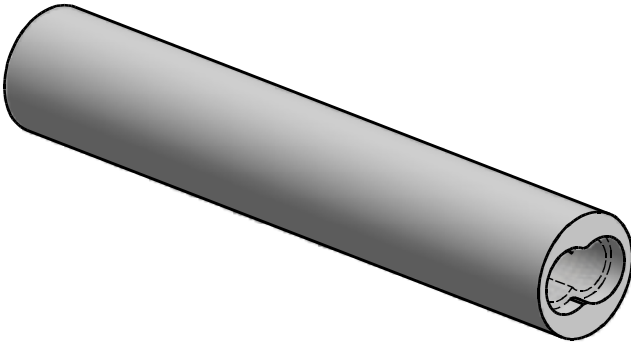


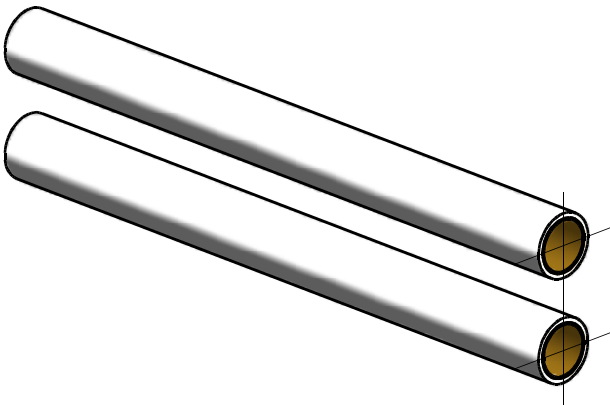
## PROCESS OF SLEEVING TWIN PARALLEL CYLINDERS



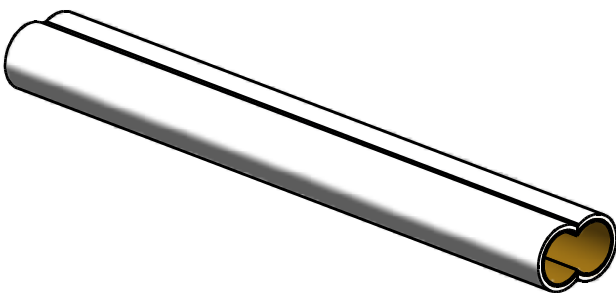
PHASE 1  
Used cylinder,  
with worn internal holes



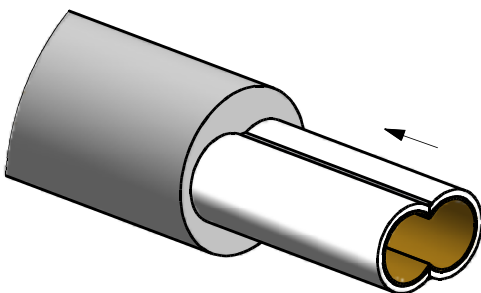
PHASE 2  
Opening the holes



PHASE 3  
Production of two bimetallic  
sleeves with internal  
bimetallic coating



PHASE 4  
Cutting and welding of the  
sleeves in order to form  
the "eight"



PHASE 5  
Inserting of the "eight" in  
the interior of the opened  
cylinder in order to return  
the cylinder to it's original  
diameter with the corresponding  
internal bimetallic coating.